



Parents Orientation Programme

AY 2024-25

CLASS II

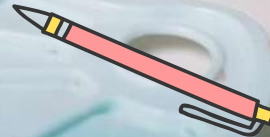


Table of Contents



Information about School



Special Events



Club Activities



Community Connect



Scholastic & Co-Scholastic Activities



Introduction of Teachers



Book Details



Time Table



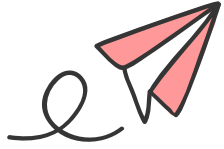
Learning Centre



Information for Parents ^{B+}

01

Information about School



Navy Children School (NCS) Primary Wing, NausenaBaugh is a well-known inclusive educational institution.



The teaching staff at the NCS Primary Wing comprises **highly qualified and experienced teachers** who are dedicated to providing **quality education** to the students.



The teachers use innovative teaching methods and techniques to **make learning fun and engaging** for the children. They also pay individual attention to each student and help them develop their **academic, social, and emotional skills**.



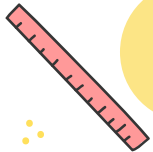
The curriculum at the NCS Primary Wing is designed to provide a **holistic learning** experience to the students. It follows the **Central Board of Secondary Education (CBSE) curriculum**.



The **Inclusive setup**, lays stress on **Experiential Learning** and also offers **extracurricular activities** such as music, dance, drama, sports, and yoga, which help in the overall development of the children.



The NCS Primary Wing also places a **great emphasis on discipline and character building**.

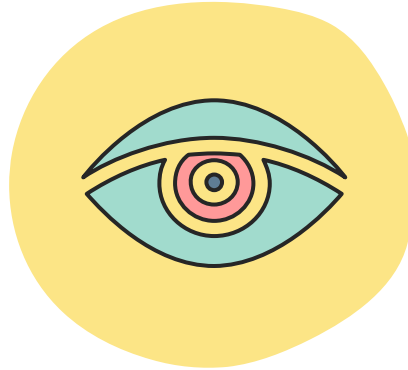


Our Motto, Vision and Objective



Motto

Knowledge Embellishes



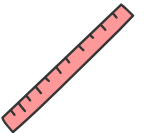
Vision

Building for Eternity



Objective

Holistic Development



School Management Committee

S.No.	Name of Members	Designation
1	Vice Admiral Sameer Saxena (AVSM,NM) Chief of staff, HQENC	Chairman, NCS (Vzg)
2	Cmde Sanjay Kumar Mahapatra DGNP (V)	PTA President Primary and Secondary Wing, NCS, NSB (Vzg)
3	Cmde A Muthuraman Command Education Officer, ENC	Vice Chairman, SMC, NCS (Vzg)
4	Surg Capt AK Sinha Oi/C, SHO (V)	Member
5	Capt (TS) BS Sekhon EXO, INS Circars	Member
6	Cdr Shalini Nair SSO (ED)-1, HQENC and Director, NCS (V)	Member

And the details of other members are available on the school website.

Parent Teacher Association

S.No.	Rank & Name	Role in PTA Committee
1	Cmde.Sanjay Kumar Mahapatra DGNP(V)	President, Primary & Secondary Wing, NCS, NSB (Vzg)
2	Dr. Parul Kumar Principal, NCS (Vzg)	Vice President
3	Mr. T Satya Prasad Vice Principal, NCS (Vzg)	Treasurer
4	Cmde Girish Kulgod	Secretary
5	Mrs. Anuradha Mago HM, Primary Wing, NCS, NSB (Vzg)	Joint Secretary
6.	Lt Cdr Balwinder Kumar	Parent Member

Principal



Dr. Parul Kumar

Navy Children School,
Visakhapatnam

Contact Details: 0891-2740283

Headmistress



Mrs. Anuradha Mago

Navy Children School, Primary Wing,
NSB, Visakhapatnam

Contact Details: 0891-2812801

Structure at Primary Wing

Headmistress
(Mrs. Anuradha Mago)

Academic Coordinator
(CL-1&2)

Mrs. Smita Singh

Class Coordinator
(CL1)

Mrs. Kanthini

Class Teacher

(Sectionwise)

Class Coordinator
(CL2)

Mrs. Satyaveni

Class Teacher

(Sectionwise)

Academic Coordinator
(CL-3)

Mrs. Geetika Baluni

Class Coordinator
(CL3)

Mrs. T.Malti

Class Teacher

(Sectionwise)

Academic Coordinator
(CL-4&5)

Mrs. A Neerja

Class Coordinator
(CL 4)

Mrs. B Manjula

Class Teacher

(Sectionwise)

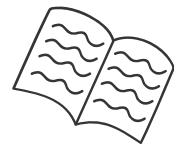
Class Coordinator
(CL5)

Mrs. Bindu

Class Teacher

(Sectionwise)

Key Details



School Timing
0740 hrs to 1340 hrs



Circulars
Monthly Circular
(Academic Plan, Sports & CCA activities)



Break Timing
Long Break - 0950 – 1005 hrs
Short Break - 1135 – 1150 hrs



PTI Meeting
Promulgated Schedule



Leave
Prior Written Application to
be Submitted



Remedials
1st and 5th Saturday



Attendance
75% attendance mandatory



School Diary
Means of Communication



Day

@



**NCS, Primary Wing,
NSB**



Teacher of the Day



Flag Hoisting



Assembly



Smart Classes



Drop Everything & Read



Computer Lab



Library



Mass PT



Games and Sports

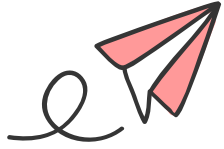




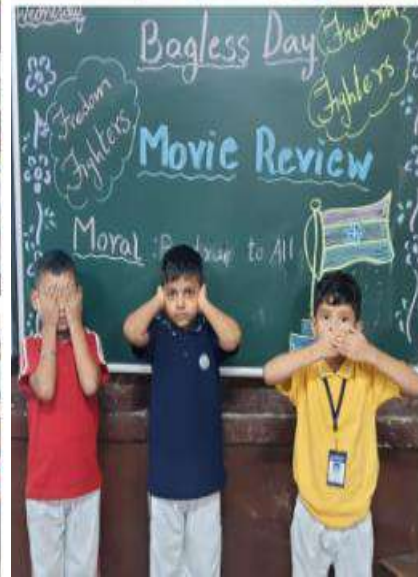
Learning Centre

02

Special Events



Bagless Day



Integrated Experiential Learning



Art



Music



Sports



Root Connect – Cultural Heritage



Special Assembly



Vanmahotsav Day



Friendship Day



Teachers' Day Celebrations



Independence Day & Prabhats Pheri



Hindi Diwas



Pongal Celebrations



International Yoga Day



International Literacy Day



Martyr's Day

Annual Prize Distribution



Star Badge Awardees – Class 5



Star Badge Awardees – Class 4



Star Badge Awardees – Class 1



Star Badge Awardees – Class 2



Star Badge Awardees – Class 3



03

Club Activities

offered Class wise



Recitation
(Hindi & English)

Art & Craft

Skit
(Hindi & English)

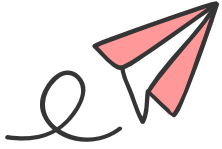
Symphony (Music)

Story - Telling
(Hindi & English)

Nature Walk the Talk

04

Community Connect



Rakshabandhan Celebrations at Sankalp



Street Play @ NSB & Naval Park



Visit to Market



Flash Mob at CMR





05

Scholastic & Co-Scholastic Activities

Restructuring School Curriculum & Pedagogy In A New 5+3+3+4 Design

Foundational Stage (5 Years)

STAGE 1

Age: 3 Years

Nursery

STAGE 2 &3

Age: 4 & 5 Years

LKG and UKG

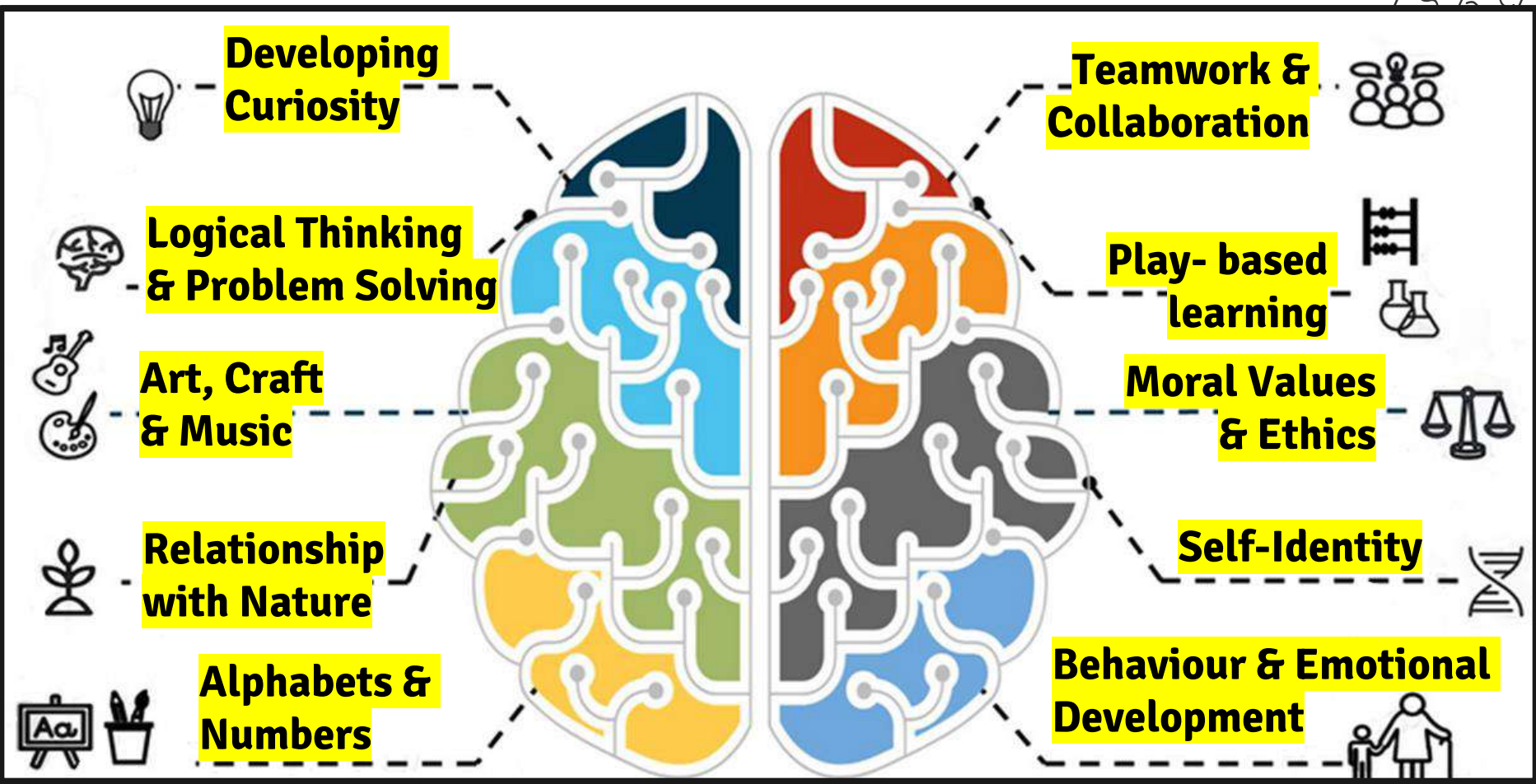
STAGE 4 & 5

Age: 6 to 7 Years

Grade 1 and 2

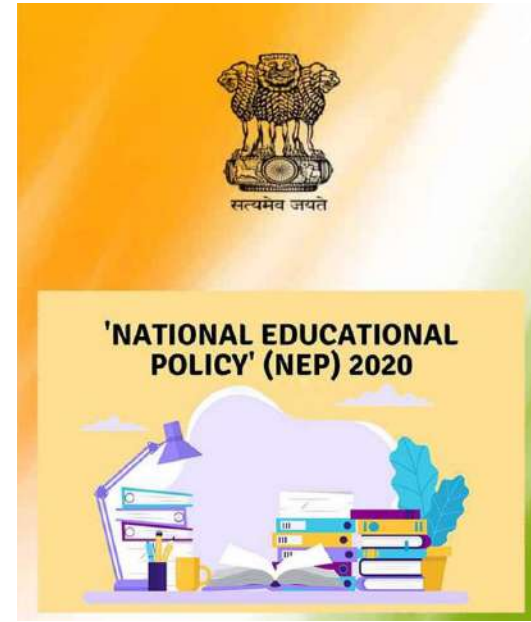
Play / Activity Based Learning

LEARNING DURING FOUNDATIONAL STAGE



HOLISTIC_PROGRESS CARD (HPC)

- NEP 2020 proposed key “**transformational**” reforms in the field of education.
- HPC promotes 360 degree holistic approach to development.
- A Collaborative effort-Parents, Teachers, Student and Peer
- Three Development Goals as per HPC are:
 - **Developmental Goal 1-Health and Well Being**
 - **Developmental Goal 2-Effective Communicator**
 - **Developmental Goal 3-Involved Learner**



HPC: A COLLABORATIVE EFFORT



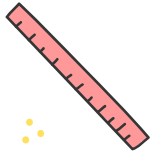
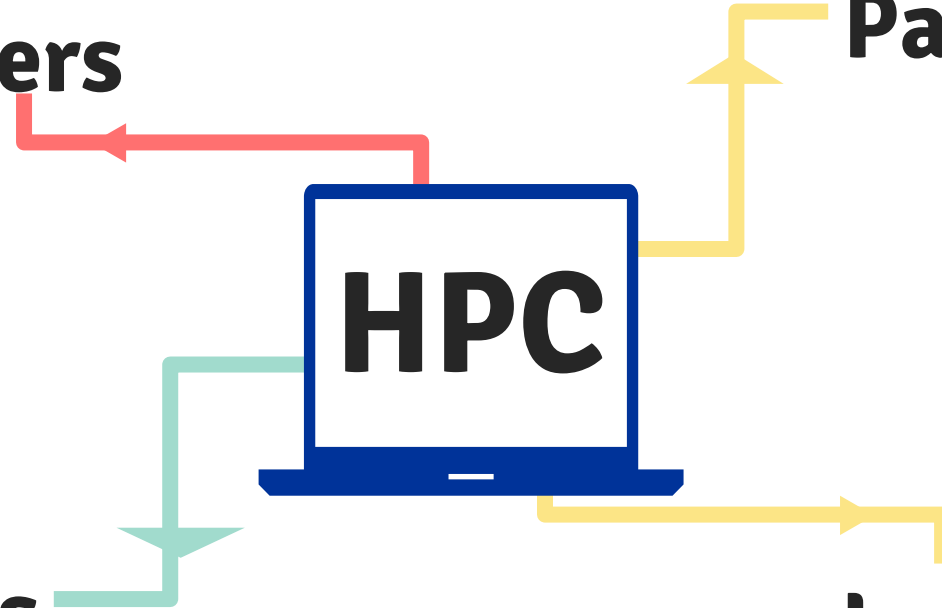
Teachers

Parents

HPC

Peers

Learner



HOLISTIC PROGRESS CARD (HPC)



Ministry of Education
Government of India

National Education Policy 2020

Shikshak Parv: Holistic Progress Card

Depicting 360° multidimensional report of students detailing their progress & uniqueness in various domains






TERM - II		
DEVELOPMENTAL GOAL 1 : HEALTH AND WELL BEING		
S NO.	LEARNING OUTCOME	
1	Awareness of self	
❖	Recognises different body parts and uses various body movements	🌱
2	Decision-making and problem solving	
❖	Deals with minor conflicts that arise during play or activity and suggests solutions.	🌱
❖	Plays or works cooperatively and enjoys playing/working with others, involves all and takes initiative in framing rules for games or play activities.	🌱
3	Development of Fine motor skills and eye-hand coordination	
❖	Displays fine motor skills with accuracy and control, engages in art integrated activities/drawing/ colouring, collage making, etc.	🌱
❖	Uses coordinated movements for using scissors, buttoning, shoe lacing, writing.	🌱
❖	Grips pencil correctly, uses smooth, controlled finger and hand movements that also require eye-hand coordination.	🌱
4	Development of gross motor skills	
❖	Displays strength, judgement and decision-making in gross motor skills.	🌱
❖	Participates actively in music, dance and creative movements like role play, dramatization, etc.	🌱
5	Development of healthy habits, hygiene, sanitation and awareness for self-protection.	
❖	Maintains hygiene and cleanliness and healthy eating practices independently.	🌱
❖	Identifies locally available food items, avoids wastage and understands the importance of food and water as a source of energy for work and play.	🌱
❖	Exhibits awareness about good touch and bad touch and expresses their feelings with trusted adults and maintains distance from strangers.	🌱
❖	Identifies common hindrances to safe play or common mishaps at school playground, road, and home, takes measures to prevent such accidents.	🌱



A child's progress will be reported on a total of 72 Parameters

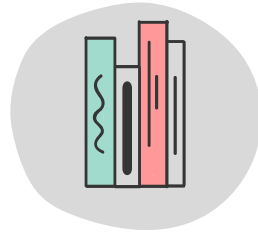
SCALES TO MEASURE THE COMPETENCIES

Level	Interpretation	Representation
BEGINNER	Student is at the beginning stage of the target competency and needs a great deal of support and handholding.	
PROGRESSIVE	Student is able to meet some part of the competencies independently but needs some occasional support and handholding.	
PROFICIENT	Student is able to meet the target competency independently, without any support.	

3

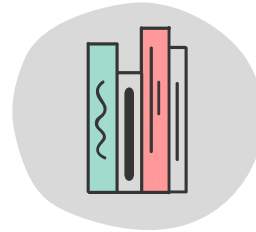
SCHOLASTIC - ACADEMICS

Academic Year 2024 - 25



Term - I

April to
September



Term - II

October to
March

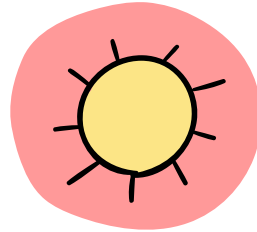
3

SCHOLASTIC - ACADEMICS

Planned Curriculum



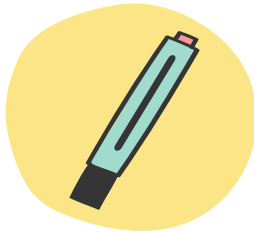
**Curricular
Subjects**



Oral work



Projects



Assignments



Practical work

SCHOLASTIC - ACADEMICS

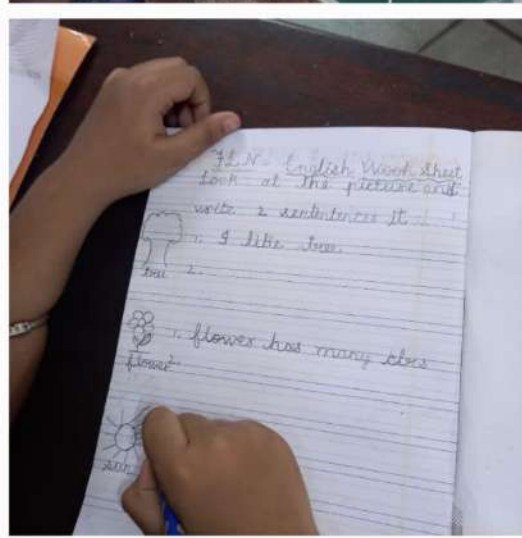
01 Questioning a learner

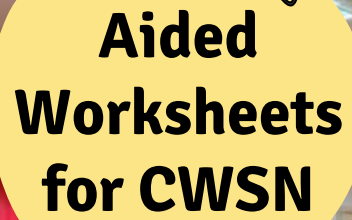
02 Observing a learner's work

03 Reviewing learner's homework

04 Talking to a learner

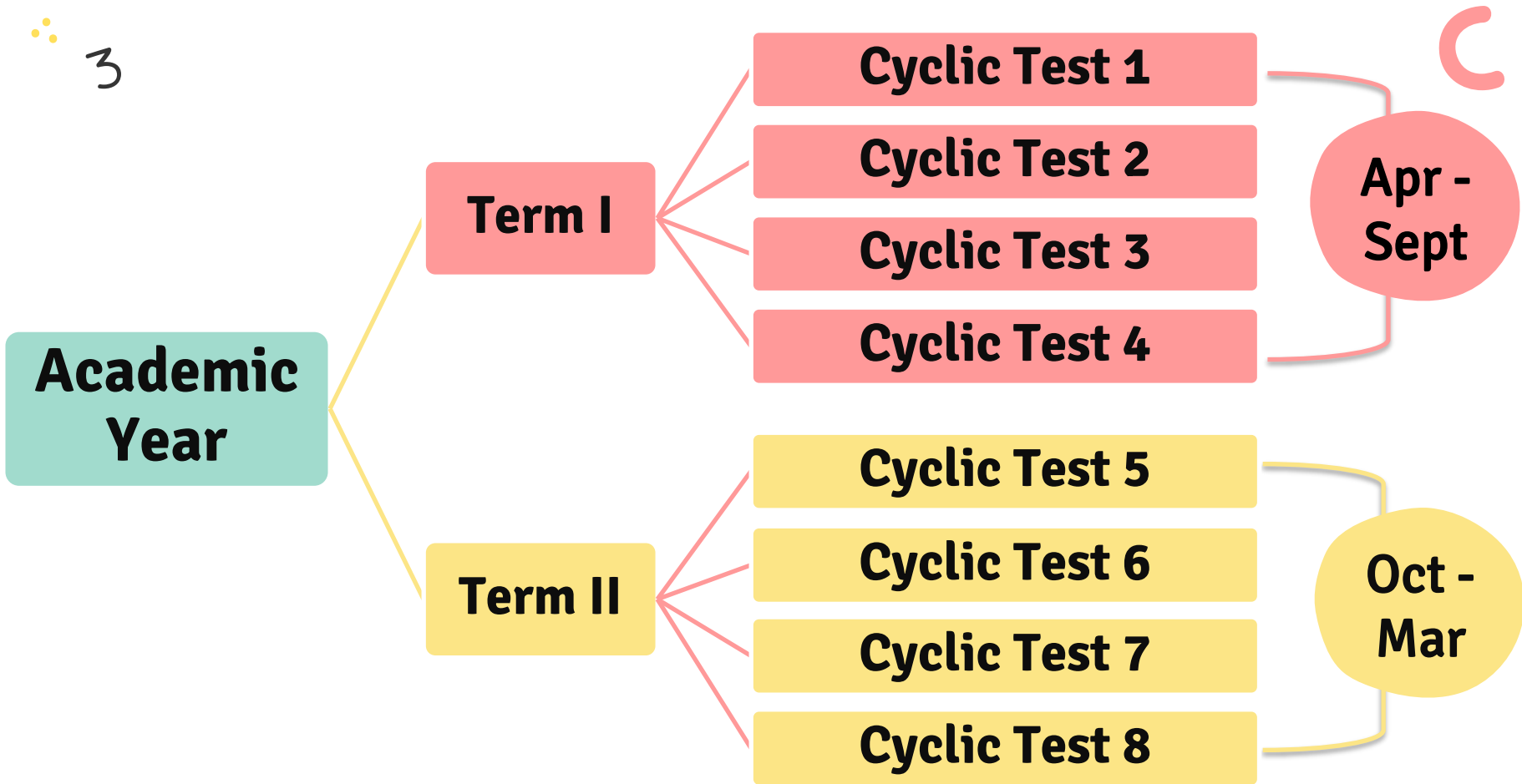
05 Listening to a learner during a recitation





**Aided
Worksheets
for CWSN**



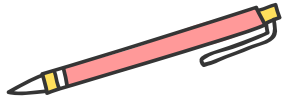


CYCLIC TESTS SCHEDULE – TERM I

S.NO	Cyclic TESTS	DURATION	TEST DATES (Last Week Of The Duration Period)	PTI DATES (Working Saturday After Cyclic Test)
1.	Cyclic Test 1	1.4.24 (Mon) to 4.5.24 (Sat)	29.4.24 (Mon) to 3.5.24 (Fri)	4-5-24 (1st Sat)
2.	Cyclic Test 2	22.6.24 (Sat) to 31.7.24 (Wed)	29.7.24 (Mon) to 2.8.24 (Fri)	3-8-24 (1st Sat)
3.	Cyclic Test 3	1.8.24 (Thur) to 31.8.24 (Sat)	26.8.24 (Mon) to 30.8.24 (Fri)	31-8-24 (5th Sat)
4.	Cyclic Test 4	1.9.24 (Sun) to 30.9.24 (Mon)	23.9.24 (Mon) to 26.9.24 (Thur)	27-9-24 (Fri)

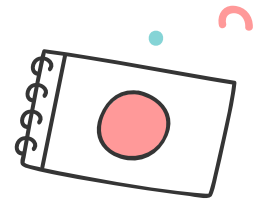
CYCLIC TESTS SCHEDULE – TERM II

S.NO	Cyclic TESTS	DURATION	TEST DATES (Last Week Of The Duration Period)	PTI DATES (Working Saturday After Cyclic Test)
1.	Cyclic Test 5	1.10.24(Tue) to 15.11.24(Fri)	11.11.24(Mon) to 15.11.24(Fri)	16-11-24(3rd Sat)
2.	Cyclic Test 6	16.11.24(Sat) to 31.12.24(Tue)	16.12.24(Mon) to 23.12.24(Mon)	4-1-25(1st Sat)
3.	Cyclic Test 7	1.1.25(Wed) to 15.2.25(Sat)	10.2.25(Sun) to 14.2.25(Fri)	15-2-25(3rd Sat)
4.	Cyclic Test 8	16.2.25(Sun) to 15.3.25(Sat)	10.3.25(Mon) to 14.3.25(Fri)	26-3-25 (Wed)

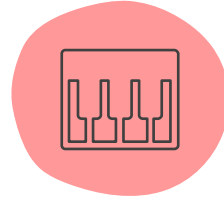


x

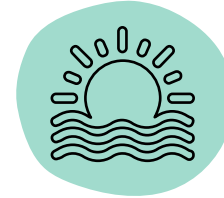
CO-SCHOLASTIC



Physical Development



Interests



Habits



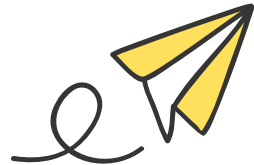
Attitudes



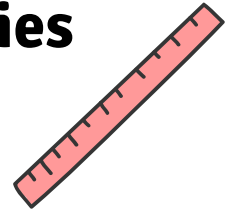
Personal Qualities

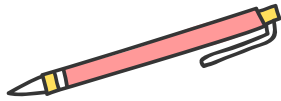


Social Qualities



c





x

Co-Scholastic Calendar AY 2024-25



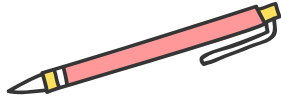
CLASS II



5

MONTH	EVENT
APRIL / MAY	NES Inception Day (Special Assembly)
	World Earth Day (Special Assembly)
	Visit to KG Wing
	Finger Prints Activity
	Clay Modelling Activity
	Root Connect -Display of Cultural Heritage
	Hopping Race
JUNE	World Yoga Day (Special Assembly)
	Standing Broad Jump
JULY	Hindi Recitation
	Flag Making Activity
	Teachers Day Card Making Competition (Intra Class)
AUGUST	Friendship Day (Special Assembly)
	Independence Day (Special Assembly) & Prabhat Pheri
	English Story Telling Competition (Intra Class)
	Shooting the Ball (HW)
	Annual Day Selections (Tentative – Last week of Aug)
SEPTEMBER	Teachers Day (Special Assembly)
	Hindi Diwas (Special Assembly)
	English Recitation (Intra Class)
	Athletic Selections (Inter House)
	Hindi Recitation

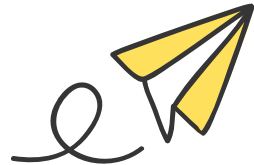




x

Co-Scholastic Calendar AY 2024-25

CLASS II

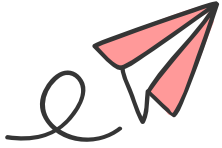


5

MONTH	EVENT
OCTOBER	<u>Gandhi Jayanti</u> (Special Assembly by Class III-V)
	Spell-O-Fun Preliminary Round (Intra Class)
	Spell-O-Fun Final Round (Inter section)
	Best Out of Waste Competition (Intra Class)
NOVEMBER	<u>Childrens' Day</u> (Special Assembly by Teachers)
	Math-O-Fun Preliminary Round (Intra Class)
	Annual Day I
DECEMBER	Math-O-Fun Final Round (Inter section)
	Shooting the Ball (HW)
	Selection for Inter Section Art Competition
	Inter Section Art Competition
JANUARY	Republic Day Celebrations
	Martyr's Day (Special Assembly)
	Market Visit
FEBRUARY	Annual Prize Distribution Ceremony (CCA & Sports)
	Annual Prize Distribution Ceremony (Academics)

06

Introduction of Teachers





Coordinators



A. Neerja
Academic
Coordinator



Geetika
Academic
Coordinator



Smita
Academic
Coordinator



Raktima
CCA
Coordinator



Jayshree
CCA
Coordinator



Jagdamba
CCA
Coordinator



Satyaveni
Class II
Coordinator



Kirti
Class II
Co-Coordinator



Class Teachers



Satyaveni
II-A



M. Manjula
II-B



SVS Kyathi
II-C



Suman Bala
II-D



Kirti
II-E



L. Mary
II-F



Sukanya
II-G



Supreet
II-H



Seema Yadav
II-J



Gayatri
II-K

FOR COMMUNICATION WITH TEACHERS

Meeting Time

- **Wednesday (1400hrs – 1500 hrs)**
- **1st & 5th Saturday (0800hrs –1330hrs)**

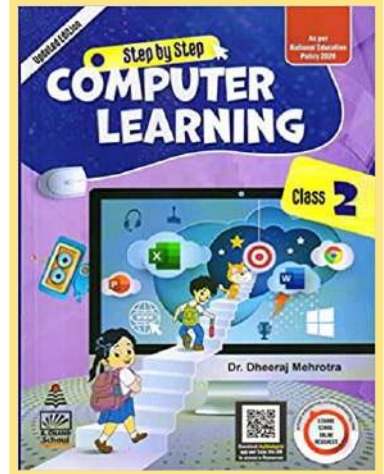
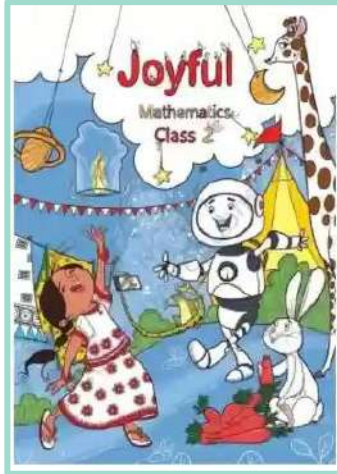
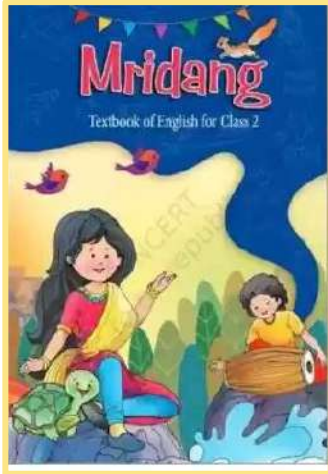
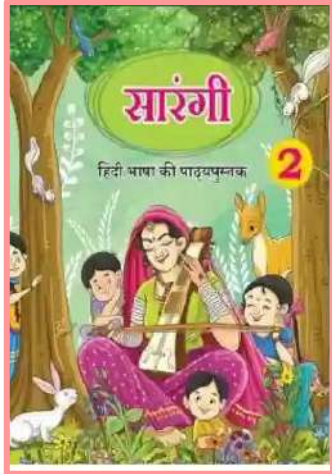
Mode of Communication

- **School Diary**
- **Entab Campus Care App**
- **School Landline – 0891- 2812801**

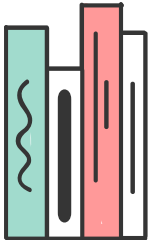
Please take prior appointment to meet the Headmistress.

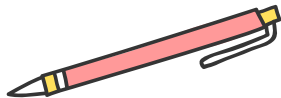
Book Details

Textbooks



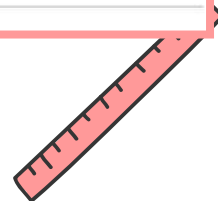
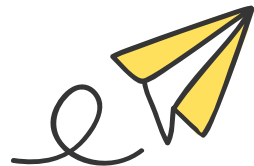
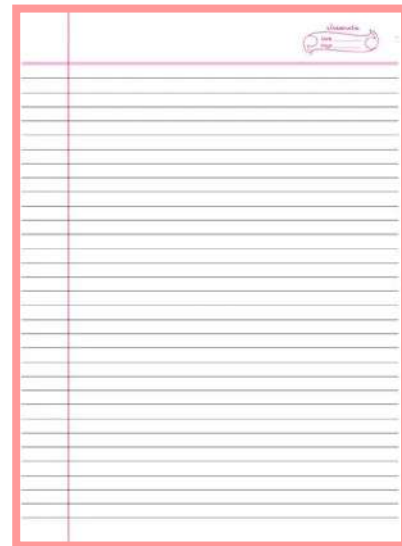
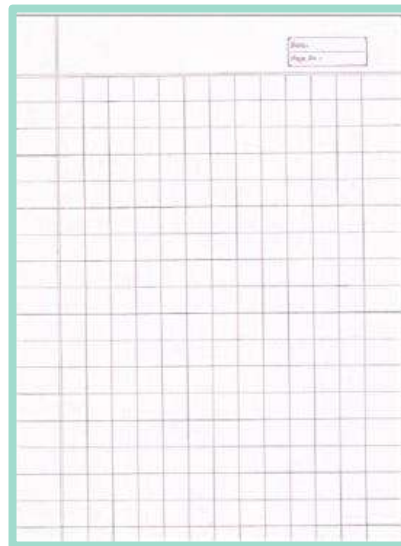
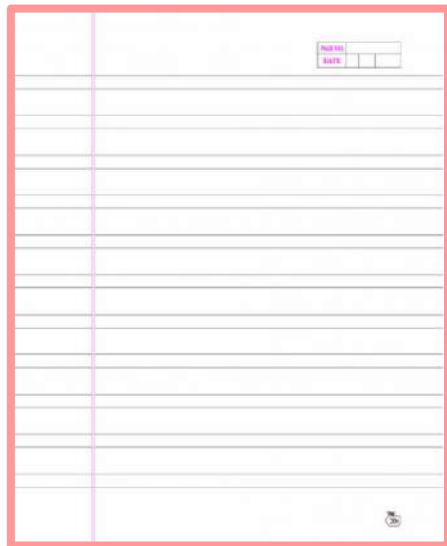
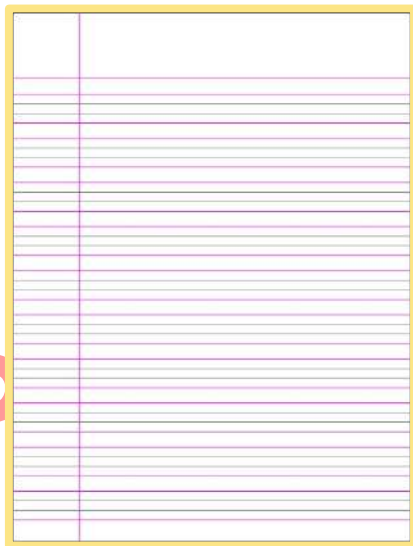
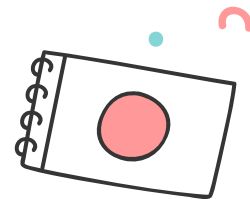
* In accordance with NEP guidelines and NES prescribed syllabus, updated textbooks for all subjects will be implemented from the upcoming Academic Year 2024-25





×

Suggested Notebooks



Time Table

DAY/ PERIOD	ELP	IST	2ND	BREAK	3RD	4TH	5TH	BREAK	6TH	7TH	8TH
MON	ASS	CT	ENG		HINDI	PT	COMP (T)		COMP (P)	MUSIC	GK
TUES	CT	CT	CLUB		HINDI	ART/ CRAFT	MATHS		MATHS	MUSIC	EUS
WED	ASS	ASS	CCA		ENG	ART/ CRAFT	HINDI		HINDI	MATHS	MATHS
THUS	CT	YOGA	ENG		ENG	MATHS	MATHS		HINDI	SPOKEN	EUS
FRI	ASS	CT	DEAR		HINDI	HINDI	MATHS		ENG	SPOKEN	LIB
SAT	-	-	-		-	-	-		-	-	-

Learning Centre

Health & Wellness Teachers



Kritika

Counsellor



Brahmani

Special Educator



Anupama

Occupational Therapist



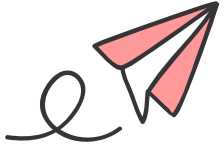
Kuna Jayanti

Special Educator

Early Intervention Clinic is available at INHS Kalyani for Children with Special Needs.

10

Information for Parents



FEE DETAILS

NAVY CHILDREN SCHOOL, VISAKHAPATNAM QUARTERLY FEE STRUCTURE (2024-25) - UPDATED

Category	LKG/UKG	I - V	VI - VIII	IX - X	XI / XII (with Comp/ IP)	XI / XII (without Comp/ IP)
PO's & Below						
Tuition Fee	9344	10063	10781	10781	11140	11140
Computer Fee	0	360	719	719	1079	0
Sr School Activity Fee	0	0	0	0	719	719
ERP/ Smart Board Fee	855	855	855	855	855	855
Annual Fee	1440	2515	2515	2515	2515	2515
Development Fee	1440	1800	1800	1800	1800	1800
Miscellaneous	250	250	250	250	250	250
PTA Fund	150	150	150	150	150	150
Total Fee for Existing Students	13479	15993	17070	17070	18508	17429
Admission Fee (**)	500	500	500	500	500	500
Caution Deposit(**)	2500	2500	2500	2500	2500	2500
Total Fee for New Students	16479	18993	20070	20070	21508	20429
CPO's & Above						
Tuition Fee	9703	10422	11679	11679	13026	13026
Computer Fee	0	360	719	719	1079	0
Sr School Activity Fee	0	0	0	0	719	719
ERP/ Smart Board Fee	855	855	855	855	855	855
Annual Fee	1440	2515	2515	2515	2515	2515
Development Fee	1440	1800	1800	1800	1800	1800
Miscellaneous	250	250	250	250	250	250
PTA Fund	150	150	150	150	150	150
Total Fee for Existing Students	13838	16352	17968	17968	20394	19315
Admission Fee (**)	500	500	500	500	500	500
Caution Deposit(**)	2500	2500	2500	2500	2500	2500
Total Fee for New Students	16838	19352	20968	20968	23394	22315
Officers						
Tuition Fee	11410	12039	13296	13296	14734	14734
Computer Fee	0	360	719	719	1079	0
Sr School Activity Fee	0	0	0	0	719	719
ERP/ Smart Board Fee	855	855	855	855	855	855
Annual Fee	1440	2515	2515	2515	2515	2515
Development Fee	2160	2515	2515	2515	2515	2515
Miscellaneous	250	250	250	250	250	250
PTA Fund	150	150	150	150	150	150
Total Fee for Existing Students	16265	18684	20300	20300	22817	21738
Admission Fee (**)	500	500	500	500	500	500
Caution Deposit(**)	2500	2500	2500	2500	2500	2500
Total Fee for New Students	19265	21684	23300	23300	25817	24738
Others						
Tuition Fee	16171	18868	19495	19495	20124	20124
Computer Fee	0	360	719	719	1079	0
Sr School Activity Fee	0	0	0	0	719	719
ERP/ Smart Board Fee	855	855	855	855	855	855
Annual Fee	2160	2515	2515	2515	2515	2515
Development Fee	2515	3595	3595	3595	3595	3595
Miscellaneous	250	250	250	250	250	250
PTA Fund	150	150	150	150	150	150
Total Fee for Existing Students	22101	26591	27579	27579	29287	28208
Admission Fee (**)	600	600	600	600	600	600
Caution Deposit(**)	4000	4000	4000	4000	4000	4000
Total Fee for New Students	26701	31191	32179	32179	33887	32808

Annual Fee, Development Fee, Diary & Magazine Fee and PTA (*PTA Fund to be paid for one child only) are collected once in a year.

**Admission fee & Caution Deposit is for new students only.

Mode of Payment: Online

School Fee to be paid Quarterly through School ERP (Campus Care only).

Note: Use Parent's login ID and password issued at the time of admission to access your Campus Care account.

TRANSPORT

The buses ply to and fro from the School are centrally controlled by **SBF (School Bus Fund) of INS Satvahana**. MTO of INS Satvahana is the Officer Incharge.

Any query regarding bus should be addressed to INS Satvahana.



The School has two buses one at NSB, the other at 104 Area. These buses are used to ferry Children to different places for various events.

School Uniform



The track pants can be procured from:

1. School premises, NCS, NSB Secondary wing
2. Shop: **Hirawat Fashions, Dabagardens, Visakhapatnam**
3. Online: **<https://www.hirawatonline.com/collections/all>**

School Uniform Guidelines

FOR GIRLS:

- 1. Hair below shoulder level should be neatly plaited into two.**
- 2. Length of the skirt should be below knee level.**
- 3. Nails should be trimmed.**
- 4. Nailpolish and Mehendi is not allowed.**

FOR BOYS :

- 1. Proper Hair cut**
- 2. Nails should be trimmed.**

Year-End Awards at NCS Primary Wing, NSB

Name of the Award	Endeavour Award
Qualifying Criteria	<p>For Classes I & II – Out of the three main subjects (English, Hindi, Maths) if the child shows improvement in the grades secured in any two subjects, from cumulative scores of Cyclic Test - 1 (Term I) to a cumulative score of Cyclic Test - 6 (Term II) from: Seed to Tree, i.e.</p> <ul style="list-style-type: none"> • Grade 'D' to Grade 'B' <li style="text-align: center;">Or • Grade 'C' to Grade 'A' / 'A+' <p>then he/she qualifies for Endeavour Award.</p>
Name of the Award	Star Badge
Qualifying Criteria	<p>a) Academics – Overall score of 90% and above in all the Cyclic Tests (1-6). b) CCA – b) Atleast one CCA prize (I, II or III position) or participation (House wise) in any of the CCA competitions conducted by the school during the current academic year 2024-25. c) Sports – Atleast one winning certificate in Sports conducted by the school, during the current academic year 2024-25.</p> <p>The students who meet the above qualifying criteria (Points a, b & c) will be considered for the “Star Badge Award.”</p>
Name of the Award	Enterprising Award
Qualifying Criteria	<p>The Best three students from the Star Badge category from class 1-2 will be awarded the <u>Enterprising Award</u>.</p> <p>Note: Student to be present for all 6 Cyclic Tests (Class 1-2).</p>



Holiday List AY 2024-25

EW

LIST OF HOLIDAYS (AY 2024-25)			
Ser	Holiday	Date	Day
1.	Ugadi		
2.	Ramzan (Eid-UI-Fitr)	09 Apr 24	Tuesday
3.	Mahavir Jayanthi	11 Apr 24	Thursday
4.	Buddha Purnima	21 Apr 24	Sunday
5.	Bakrid (Eid-UI-Zuha)	23 May 24	Thursday
6.	Muharram	17 Jun 24	Monday
7.	Independence Day	17 Jul 24	Wednesday
8.	Ganesh Chaturthi (Vinayaka Chavithi)	15 Aug 24	Thursday
		07 Sep 24	Saturday
9.	Milad-Un-Nabi Or Id-E-Milad (Birthday Of Prophet Mohammad)	16 Sep 24	Monday
10.	Mahatma Gandhi Jayanti	02 Oct 24	Wednesday
11.	Dussehra (Vijaya Dashmi)	12 Oct 24	Saturday
12.	Diwali (Deepavali)	31 Oct 24	Thursday
13.	Guru Nanak's Birthday	15 Nov 24	Friday
14.	Christmas Day	25 Dec 24	Wednesday
15.	Makar Sankranti	14 Jan 25 / 15 Jan 25	Tuesday / Wednesday
16.	Republic Day	26 Jan 25	Sunday
17.	Maha Shivaratri	26 Feb 25	Wednesday

Vacations

Ser	Type of Vacation	From	To	No. of days
1.	Summer Vacation	For Classes LKG to IX & XI		47
		06 May 24 (Mon)	21 Jun 24 (Fri)	
		Reopening : 24 Jun 24 (Mon)		37
		For Classes X & XII		
06 May 24 (Mon)	11 Jun 24 (Tue)	09		
Reopening : 12 Jun 24 (Wed)				
2.	Autumn Vacation	For Classes KG to XII		09
		03 Oct 24 (Thu)	11 Oct 24 (Fri)	
		Reopening : 14 Oct 24 (Mon)		02
3.	Diwali Break	31 Oct 24 (Thu)	01 Nov 24 (Fri)	
4.	Winter Vacation	24 Dec 24 (Thu)	01 Jan 25 (Wed)	09
		Reopening : 02 Jan 25 (Thu)		
5.	Pongal Break	13 Jan 25 (Mon)	15 Jan 25 (Wed)	03
Total No of Vacations/ Break				70



Advisory for Parents

1. Students are very active on social media such as Whatsapp groups, Instagram, Facebook, etc. **Monitor your child strictly for the same.**
2. **Illness** - Please do not send your child to school, if unwell.
3. **Change in the Address or Contact Number** - Please inform the Class Teacher through School Diary.
4. **ENTAB – Login details** (User ID & Password) for Entab are provided by the School Admission office for the new admissions. All communication to be done through ERP only.
5. **E-Almanac** will be shared soon.
6. **Whatsapp to be discontinued w.e.f 1st April 2024.**

General Guidelines

Proper timetable for child

en

Encourage child to keep interest

Assist the child to follow the school norms

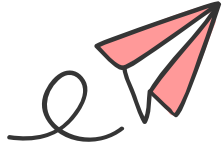
Practice reading & writing

Completion of daily work

Child to be self toilet trained

Listen to your child with empathy





Question & Answers





Thank You!

For further information:

E-Mail: ncsprimaryvisakha@rediffmail.com

Website: www.ncsvizag.edu.in